



BADGER
PRODUCT GROUP

2025 REFERENCE GUIDE

FIFTH WHEELS | BRAKE CHAMBERS | KINGPINS
LANDING GEAR | AIR SPRINGS | BRAKE DRUMS

FIFTH WHEELS

NO HOSES. NO WIRES. NO MESS.

BADGER BFW1



MODELS

BFW1B	Designed for use with any BADGER Fifth Wheel mounting systems.
BFW1H	Compatible with existing Holland Fifth Wheel mounting systems.
BFW1J	Compatible with existing Jost Fifth Wheel mounting systems.
BFW1F	Compatible with existing Fontaine Fifth Wheel mounting systems.

REPLACEMENT PARTS

	REBUILD KIT (INCL. LOCKING JAWS, BUSHINGS, HANDLE AND HARDWARE)
BFW1B	BFW1BK
BFW1H	BFW1HK
BFW1J	BFW1JK
BFW1F	BFW1FK

REPLACEMENT BADGER LUBRICANTS® GREASE CARTRIDGES

BGC1-S	Case (12 / 14oz SUMMER)
BGC1-W	Case (12 / 14oz WINTER)

PATENT(S) PENDING
Air-release option available.

TECHNICAL DATA

MAXIMUM VERTICAL RATING	55,000 lb
HORIZONTAL PULL RATING	150,000 lb
KINGPIN SIZE	2"

ALL MANUFACTURER names and trademarks such as Holland, Jost or Fontaine are used in this catalog for reference purposes only. All trademarks remain property of their respective owners.



FIFTH WHEELS

STANDARD DUTY **BORING** FIFTH WHEEL

BADGER BFW18



MODELS

BFW18B	Designed for use with any BADGER Fifth Wheel mounting systems.
BFW18H	Compatible with existing Holland Fifth Wheel mounting systems.
BFW18J	Compatible with existing Jost Fifth Wheels mounting systems.
BFW18F	Compatible with existing Fontaine Fifth Wheel mounting systems.

TECHNICAL DATA

MAXIMUM VERTICAL RATING	50,000 lb
HORIZONTAL PULL RATING	150,000 lb
KINGPIN SIZE	2"

Air-release option available.

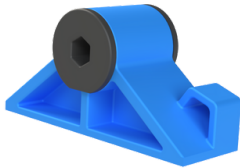
ALL MANUFACTURER names and trademarks such as Holland, Jost or Fontaine are used in this catalog for reference purposes only. All trademarks remain property of their respective owners.

INNOVATION. *DRIVEN.*

REV.5 01.10.25 Page 3

BADGER

MOUNTING SYSTEMS



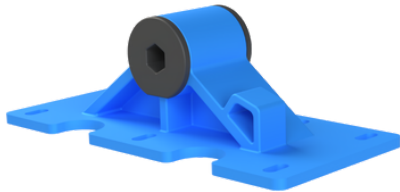
WELD-IN BRACKET

B-102AR	RIGHT
B-102AL	LEFT



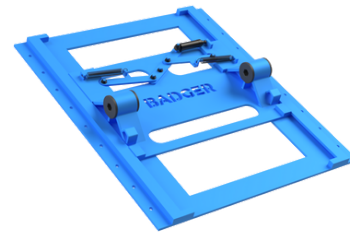
BOLT-ON OUTBOARD MOUNT

B-105A2	Complete Assembly
---------	-------------------



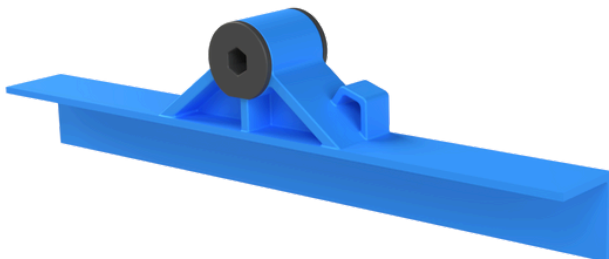
BOLT-ON FOOT MOUNT

B-103AR	RIGHT
B-103AL	LEFT



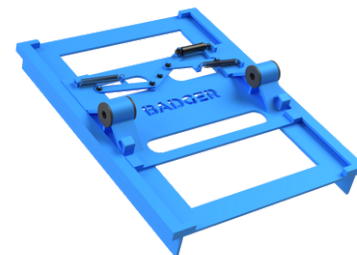
OUTBOARD AIR SLIDER

B-108A SERIES	Complete Assembly
---------------	-------------------



BRACKET WITH ANGLE MOUNT

B-104AR	RIGHT
B-104AL	LEFT



INBOARD AIR SLIDER

B-109A SERIES	Complete Assembly
---------------	-------------------



All models available in range of height and frame widths.

KINGPINS

THE **ONLY** KINGPINS ON THE MARKET
BACKED BY A WARRANTY.

MUSHROOM

MODELS

BK-PM2	2" Standard OEM Replacement
BK-PM35	3.5" Standard OEM Replacement

TECHNICAL DATA

MATERIAL	AISI 8630H
SURFACE HARDNESS	302-363 BHN

BOLT-IN

MODELS

BK-PB2	2" Standard OEM Replacement
BK-PB35	3.5" Standard OEM Replacement
BK-PBH	Housing Standard OEM Replacement

TECHNICAL DATA

KINGPIN MATERIAL	AISI 8630H
HOUSING MATERIAL	ASTM A572
SURFACE HARDNESS	302-363 BHN



**1 YEAR
MANUFACTURING
DEFECTS WARRANTY.**

INNOVATION. *DRIVEN.*

LANDING GEAR

INDUSTRY **LEADING** 11-YEAR GEARBOX WARRANTY

STANDARD DUTY

MODELS

INBOARD KIT W/ CONNECTING ROD AND HANDLE	B-LK1
OUTBOARD KIT W/ CONNECTING ROD AND HANDLE	B-LK2
INDIVIDUAL DRIVING LEG	B-LD1
INDIVIDUAL DRIVEN LEG	B-LD2

REBUILD KIT

INCL. GEARS, SHAFTS, PINS	B-LRK1
---------------------------	--------

TECHNICAL DATA

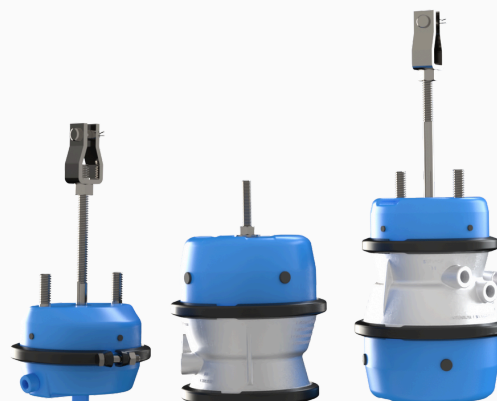
STATIC LOAD	154,000 LB
LIFTING LOAD AT 100 FT-LBS INPUT TORQUE	61,000 LB
SIDELOAD	28,000 LB
GEAR RATIOS	LOW 25 / HIGH 3.5 TURNS/INCH



Available in both standard 17* and 19".

BRAKE CHAMBERS

INTENTIONALLY
OVERBUILT WITH
A 3-YEAR
WARRANTY.



SERVICE

MODELS

BC-S16	TYPE 16	2.25" STROKE
BC-S20	TYPE 20	2.5" STROKE
BC-S24	TYPE 24	2.5" STROKE
BC-S30	TYPE 30	2.5" STROKE

TECHNICAL DATA

BOLT THREAD	5/8" - 11
PUSHROD THREAD	5/8" - 18
PORT THREAD	3/8" - 18 NPT



INNOVATION. **DRIVEN.**

REV.5 01.10.25 Page 7

BRAKE CHAMBERS

PIGGYBACK

MODELS

BC-P33	TYPE 30/30	2.5" STROKE
BC-P331	TYPE 30/30	3" STROKE

TECHNICAL DATA

PORT THREAD	(2) 3/8" - 18 NPT
-------------	-------------------



COMPLETE

MODELS

BC-C33	TYPE 30/30	2.5" STROKE
BC-C331	TYPE 30/30	3" STROKE
BC-C36	TYPE 30/36	2.5" STROKE
BC-C361	TYPE 30/36	3" STROKE

TECHNICAL DATA

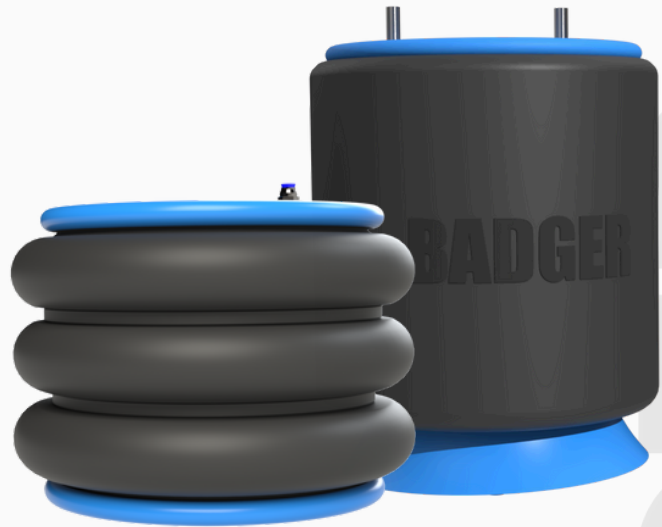
BOLT THREAD	5/8" - 11
PUSHROD THREAD	5/8" - 18
PORT THREAD	(2) 3/8" - 18 NPT



Additional models available.

AIR SPRINGS

**HEAVY DUTY OE
REPLACEMENTS
FOR MOST
APPLICATIONS**



3-year or 300,000 mile warranty, whichever comes first.

CROSS REFERENCE GUIDE

MODELS

If the model number you require is not listed below, please inquire.

	GOODYEAR	FIRESTONE	MERITOR
BO7-0811-01	1R13-128	W01-358-8708	FS8708
BO7-0811-02	1R12-432	W01-358-9875	MAF1191
BO7-0811-03	1R14-171	W01-358-8091	MAF8091

INNOVATION. **DRIVEN.**

REV.5 01.10.25 Page 9

AIR SPRINGS

CROSS REFERENCE GUIDE CONT.

	GOODYEAR	FIRESTONE	MERITOR
BO7-0811-04	1R12-1097	W01-358-8864	MAF8864
BO7-0811-05	1R12-603	W01-358-9781	MAF9781
BO7-0811-06	1R12-186	W01-358-9780	MAF9781
BO7-0811-07	1R12-668	W01-358-9978	MAF9978
BO7-0811-08	1R12-069	W01-358-9069	MAF9069
BO7-0811-09	1R13-124	W01-358-8755	MAF8755
BO7-0811-10	1R12-405 1R12-615	W01-358-8829	MAF8829
BO7-0811-11	1R13-159	W01-358-8709	FS8709
BO7-0811-12	1R13-130	W01-358-8729	FS8729
BO7-0811-13	1R11-221	W01-358-9622	FS9622
BO7-0811-14	1R11-028	W01-358-9422	MAF9422
BO7-0811-15	1R12-375	W01-358-9265	MAF9265
BO7-0811-16	1R12-1047	W01-358-9807	-
BO7-0811-17	1R12-398 1R12-538	W01-358-9648	MAF9648



BRAKE DRUMS

13-MONTH LIMITED WARRANTY

STANDARD

MODEL

B-1657

TECHNICAL DATA

SIZE	16.5" X 7"
BOLT HOLE PATTERN	10
PILOT CENTERED	8.78"
WEIGHT	105 lb
MOUNT	OUTBOARD

Ask about bulk quantity discounts.

If unsure about application/fitment, please reach out to info@badgerproduct.com.



INNOVATION. **DRIVEN.**

REV.5 01.10.25 Page 11

CONTACT

Phone: 614-641-0515

Email: info@badgerproduct.com

Website: www.badgerproduct.com

Please visit our website
www.badgerproduct.com for
current warranty information.

ALL MANUFACTURER names
and trademarks such as
Holland, Jost or Fontaine are
used in this catalog for
reference purposes only. All
trademarks remain property of
their respective owners.

BADGER Product Group
reserves the right to change or
alter any products at any time.
Images contained in this
document are for illustrative
purposes only and should not
be considered a specification.

